

Please note the Olympic 2012 supplement (July & August) £50 per person per week will apply to all bookings.

HALLS OF RESIDENCE

ZONE 1

Beaumont Court:

Zone 1 - Kings Cross Underground Station

Available all Year Round on self-catering basis. Olympic 2012 supplement (July & August) £50 per person per week

Single room with en-suite bathroom per week £260

Beaumont Court is approximately 12 minutes' walk from Kings Cross underground station on the Piccadilly, Victoria, Northern, Metropolitan, Circle and Hammersmith & City lines. Camden Town and Mornington Crescent underground stations are also a short walk away. The residence opened in September 2006 and consists of flats of 5, 6 and 7 single rooms, all with en-suite shower rooms (toilet, washbasin and shower cubicle) and fully equipped kitchen/sitting area with breakfast bar, stools and sofa. Bedrooms are furnished with a big bed, chest of drawers, wardrobe, mirror, shelves, lights, curtains, desk, and chair and fitted carpet. Corridors and kitchens are cleaned weekly. Bed linen is provided, but students should bring their own bath towels. Students are responsible for cleaning their own bedroom and bathroom and laundering their bed linen. There is an on-site laundry, common room with TV, roof terrace, garden, bike storage and CCTV. Wheelchair access. Internet access is included in the price.



Lee Abbey London

Zone 1 – Gloucester Road or Earls Court Underground Station

Available all Year Round, Except July & August

Half board (breakfast and dinner) basis Monday – Friday

Full board (breakfast, lunch and dinner) on Saturday and Sunday

Single room (including meals as specified) per week £315.00 plus £50 Olympics supplement from July to August

Lee Abbey is a catered hall of residence offering a friendly and safe place for students to call home whilst studying in London. The residence is located in a quiet and exclusive part of Kensington and has two lounges, a coffee bar, a television room and a games room. There is also a kitchen where residents can prepare occasional meals, a coin operated laundry and a spacious, south-facing garden for quiet relaxation. Rooms are cleaned weekly and bed linen changed every other week. Students should bring their own bath towels. High-speed Broadband Internet access is available in all rooms.



Belvedere House

**Zone 1 - Borough, Elephant & Castle and Waterloo Underground Station.
Available all year round**

Single en suite self-catering, from £230pw plus £50 Olympics supplement from July to August

Belvedere House is a new, architect designed, self-catering residence. Well situated in historic Southwark it is close to a number of underground stations including Southwark, Elephant and Castle, Borough and Waterloo, giving easy access to both the City and the West End. The Tate Modern Gallery, the Globe Theatre and Southwark Cathedral are in easy walking distance. At only 15 minutes bus ride from Holborn this residence is ideally located. The House has accommodation for 179 residents in en-suite bedrooms, mostly single but with some double bedrooms and nine rooms designed for residents with physical disabilities.

The House is attractively designed with two lounges and a TV room overlooking a water feature, a garden room and a quiet room. There are two lifts, a laundry and vending machines. Belvedere House has cabled Internet access in each room, as well as mini fridges, mini freezers and flat screen 19 inch TV's are now available in the premium single rooms.



ZONE 2-3

Britannia City Student Living:

Zone 2 - Canada Water Underground Station

Available all Year Round - Self-catering basis - Olympic 2012 supplement (July & August) £50 per week

Standard single room per person per week £175.00

Twin room per person per week £135.00

Double room per person per week £125.00

Double room single occupancy £195.00

Britannia City is located within 3 minutes walk from Canada Water underground station on the Jubilee Line. It is just 2 stops to London Bridge, 4 stops to Waterloo and 7 stops to Bond Street in the heart of London's West End. Britannia City is a short walk from Surrey Quays retail centre which offers a wide range of amenities, shops, food outlets, supermarket and cinema. There is a leisure centre/gym and a park, opposite the residence.

The recently refurbished residence comprises a total of 77 (single, double and twin) study bedrooms in 21 student flats over 7 floors. Furniture is contemporary in style. Kitchens are fully equipped with appliances, utensils, pots, pans, crockery and cutlery. Modern (shared) bathrooms have separate WC, bathtub with overhead shower and washbasin. There is a landscaped outdoor area, a common room with wide screen plasma TV and laundry facilities in each flat. There is also limited off-street parking, bike racks and suitcase storage. Apartments including bedrooms, bathrooms and kitchens are cleaned and bed linens and towels, which are provided, are changed weekly. The residence has a live-in manager and CCTV. Wireless Internet access is available.



Greenview Court

ZONE 2 – ARCHWAY or ZONE 3 - HIGHGATE UNDERGROUND STATION

Available all Year Round – self-catering basis. £50 Olympics supplement from July to August

Standard single room per week£210.00

Double room per person per week£220.0

Double room with double occupancy per week£135.00

Twin room per person per week £140.00

Situated in a prestigious residential area, between Archway (zone 2) and Highgate (zone 3) underground stations, the residence is a 5 minute bus journey or 15 minute walk from Archway and an 11 minute walk from Highgate. Archway and Highgate are on the Northern Line and within a short travelling distance of Central London. It is also ideally located for bus routes to many major London locations. The area is close to charming Highgate Village, with its 18th century architecture and beautiful homes, with the busier Archway just down the hill. A variety of shops, supermarkets, pubs and restaurants are available in both areas and for those who enjoy walking, Hampstead Heath is nearby.

Refurbished in summer 2011 to a high standard, Greenview Court was built in the 1920's and is a neo-Georgian building with a large private landscaped garden, veranda and balcony. The residence comprises a total of 84 bedrooms over 5 floors, including single, double and twin rooms with shared bathrooms and a number of en-suite bedrooms and studios. Furniture is modern in style. There are kitchens and bath or shower rooms on every floor. Kitchens are fully equipped with appliances, utensils, pots, pans, crockery and cutlery. There is a student lounge with large wide screen TV and on-site coin operated laundry. Utility bills, weekly cleaning of bedrooms and linen change (with linens provided) are included in the price. The residence has limited onsite parking and bike storage. There is a live-in manager and CCTV. Internet access is available.



OPAL 3

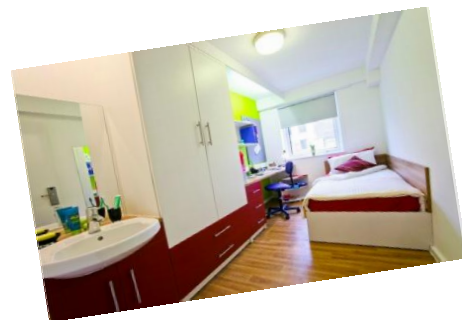
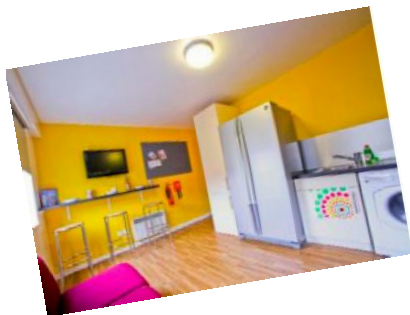
Zone 2 – Holloway Road Underground Station.

Available all Year Round - self-catering basis

Single room per week £215 plus £50 Olympics supplement from July to August

At Opal 3 you can take advantage of the stunning new full refurbishment, purpose designed building. This purpose-built property provides accommodation for over 300 students in 4, 5, or 6-bedroom cluster flats. It offers a great location, just 8 minutes' walk from Holloway Road tube station.

Newly refurbished in September 2010, each room is furnished with a washbasin, bed, drawer chest, bedside cabinet, desk light, book shelf and study desk. Shared kitchens come with a 21" TV with Freeview channels.



OPAL 4

Zone 2- Tufnell Park Underground Station.

Available all Year Round, self-catering basis. Plus £50 Olympics supplement from July to August

Single en-suite room per week £250

Opal 4 offers brand new single en-suite rooms in cluster flats of about 5-6 bedrooms. Featuring modern décor throughout, this spacious single room has been recently completed to an excellent standard, with lift and porter, the property comprises 5 Single En-Suite rooms with modern kitchen and living room. In a pleasant tree-lined street close to the wide range of amenities on Holloway Road and Tufnell Park, while the vibrant shops, bars and restaurants of central Islington are also nearby. Tufnell Park Underground Station (Northern Line) is close by for links into the City and the West End. Other benefits include wireless internet connection, Bike shed, communal gardens, on site laundry room and entertainment hall access. Bed Linen included and communal area cleaning once a week

□



Westferry Residence

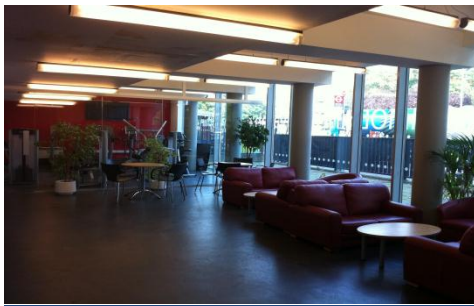
Zone 2 Westferry DLR Station

Available all year round,

Single en suite self-catering from £220pw plus £50pw Olympics supplement from July to August

The Westferry Residence has just open its doors to the latest architecturally designed building within walking distance of Canary Wharf. With a 12 Station gym featuring treadmills, cross trainers, strength/conditioning machines available to all students. Brand new single and double en-suite rooms alongside standard single rooms give an oasis of tranquillity in Central London.

Located just 200 meters from Westferry DLR Station, the ideally situated site is only 5 minutes from The City and in easy reach of the O2 Arena and Canary Wharf, where you will find a top quality selection of bars, restaurants, clubs as well as a multiplex cinema and an award-winning concert venue. All this at only 15 minutes from Holborn makes Westferry Residence the ideal place to enjoy all London has to offer. Cabled internet is available. A fully equipped kitchen is available to all students. Rooms are cleaned weekly. A laundry room and a vending machine are located on the ground floor.



FLAT /HOUSE SHARE

ZONE 1-2

Rathbone Place

Zone 1 Tottenham Court Road Underground Station

Available Year Round. £50 Olympics supplement from July to August

Self-catering basis - includes utility bills, council tax, TV licence, weekly cleaning and linen change

Twin room per person per week £215.00

Double room per person per week £295.00

Double room with double occupancy per week £190.00

Built in the 1800's and completely renovated and redecorated in 2006, the apartments are in the heart of Central London's famous West End. Within walking distance of many language schools, theatres, restaurants, bars, clubs and department stores, the apartments offer a comfortable lifestyle in a vibrant and convenient location. There are 15 large bedrooms in 5 apartments, which can be booked by room, bed or apartment. All bedrooms are tastefully decorated in modern style with good storage space, comfortable beds, desks, chairs, blinds and plasma screen TV. Kitchens are spacious with a dining area and are fully equipped with washing machine and dryer, microwave, kettle, toaster, iron and ironing board. All kitchen utensils, crockery and cutlery are provided. Bed linen and towels are provided. CCTV, wireless Broadband Internet connection is available in every apartment.



Flat Share

Various locations in zone 3

Available all Year Round. £50 Olympics supplement from July to August

Self-catering basis - includes utility bills, council tax, TV licence and wireless internet

Standard single room per week £200

Standard Double room per week £270

Standard Twin room per person per week £250

Luxury Single en-suite per week £300

Luxury Double en-suite per week £350

The Flats are located in the heart of Central London's famous West End in zone 1-2; within walking distance from many theatres, restaurants, bars, clubs and department stores. They offer a comfortable lifestyle in a convenient location. The flats offer fitted kitchen, fitted bedroom and also It includes utility bills and wireless internet connection.



House Share

Zone 2 - Various locations Available all Year Round. £50 Olympics supplement from July to August

Self-catering basis - includes utility bills, council tax, TV licence and wireless internet

Twin room per person per week £145.00

Standard single room per week £175.00

The houses are located in the vibrant area of the Docklands in areas like Canada Water, Bermondsey, Surrey Keys and Rotherhithe, in zone 2-3, within convenient reach of the city centre by buses and trains, 30-40 minutes to Oxford Circus. All bedrooms are tastefully decorated in modern style with good storage space, comfortable beds, desks, chairs, blinds and plasma screen TV. Kitchens are spacious with a dining area and are fully equipped.



House Shares

Zone 3 - Various locations

Available all Year Round. £50 Olympics supplement from July to August

Self-catering basis - includes utility bills, council tax, TV licence and wireless internet

Standard single room per week £165.00

Large single room per week £170.00

Twin room per person per week £120.00

The houses are located near underground stations and offer twin and single rooms. Recently decorated in contemporary style with laminated wood floors, the houses each have a living room with TV and often a garden. The modern bathrooms are tiled and kitchens are fully equipped with washing machine and all major appliances (except dishwasher), cutlery, crockery and cooking utensils are provided. Rooms are cleaned before and after occupancy only and common areas of the houses are cleaned every 2 weeks.

Bed linen is provided but students should bring their own towels. Students are responsible for cleaning their own rooms and laundering their bed linen. Wireless Broadband Internet connection is included in the price.



STUDIOS

Studios and Serviced Apartments

ZONE 1 – South Kensington Underground Station

Available all Year Round. £50 Olympics supplement from July to August

Studios and apartments of varying sizes (self-catering basis) from £520.00 per studio or apartment per week.

Self-contained accommodation offering privacy and flexible lengths of stay, in a prime location. Suitable for executives, families or independent students. We offer fully furnished studios and one and two bedroom serviced apartments in Chelsea, just 5 minutes' walk from South Kensington underground station. The accommodation can be booked for any duration, including very short stays of just a few days. All apartments are individually designed and have self-contained kitchens and en-suite bathrooms. The rooms have a table and chairs for working and dining and the one and two bedroom apartments have a spacious living room with comfortable sofas and separate dining area



OPAL 4 Studios

Zone 2 – Tufnell Park Underground

Available all Year Round

Self-catering basis

Studio per week per person £270 plus £50 Olympics supplement from July to August

Studios are large self-contained, newly furnished in an amazing property. With modern decor throughout and entertainment facilities, this is a great place to stay in while you study. This property is closely located to Tufnell Park Station in zone 2. Each room is fully furnished with desk, internet access points, wardrobe and en-suite bathroom. The complex is highly secured with 24hr receptions and security. Bed Linen included and communal area cleaned once a week. The entertainment facilities and common room have been equipped for a great social atmosphere. They have vending machines, large screen SKY television, cinema room facilities, gaming areas and even landscaping opportunities.



HALLS OF RESIDENCE SUMMER 2012

ZONE 1

Schafer House:

Zone 1 – Warren Street Underground

Available from 16 June – 16 September 2012

Single room (self-catering basis) per person per week £230.00

Olympic 2012 supplement (July & August) £50 per person per week

Centrally located, within walking distance of Oxford Street and 3 minutes' walk from Warren Street Underground (which is 1 stop from Oxford Circus Underground Station), the residence offers flats with 5 single bedrooms, each with 1 shower room, 2 toilets and a spacious fully equipped kitchen. All bedrooms have a wardrobe and a washbasin. The residence has a very good security system, a spacious TV lounge and a laundry room. Flats are cleaned and bed linens changed weekly. Students are advised to bring bath towels. Wheelchair access. Internet access is available.



Will Wyatt Court:

Zone 1 – Old Street Underground

Available from July – September 2012

Single room with en-suite bathroom (self-catering basis) per person per week £250.00

Olympic 2012 supplement (July & August) £50 per person per week.

Located in zone 1, in trendy Hoxton, the residence is approximately 10 minutes' walk from Old Street Underground with a journey time of around 20 minutes to Oxford Street. The residence has 514 rooms with en-suite bathrooms and fully equipped kitchen/diners which are shared by up to 8 residents. The residence has a very good security system, TV lounge with SKY, vending and recreational facilities, an enclosed roof courtyard, terrace and laundry room. Flats are cleaned and bed linens changed weekly. Students are advised to bring bath towels. Wheelchair access. Internet access is available.



Somerset Court

ZONE 1 – EUSTON UNDERGROUND

Available from 7 July - 16 September 2012

Single room with en-suite bathroom (self-catering basis) per person per week £260.00

Olympic 2012 supplement (July & August) £50 per person per week

Somerset Court is approximately 5 minutes' walk from Euston underground (and main line) stations, on the Northern and Victoria lines. This modern residence consists of flats of 4, 5 and 6 single bedrooms, all with en-suite shower rooms (toilet washbasin and shower cubicle) and fully equipped kitchen/ sitting area with breakfast bar, stools and sofa. Bedrooms have $\frac{3}{4}$ beds and are fully furnished in modern style. Corridors and kitchens are cleaned weekly. Bed linen is provided, but students should bring their own bath towels. Students are responsible for cleaning their own bedroom and bathroom and laundering their bed linen. There is an onsite laundry, common room with flat screen TV, vending machine and pool table, courtyard, bike storage and CCTV. Internet access is included in the price.



Nutford House

ZONE 1 – MARBLE ARCH UNDERGROUND

Available from June - August 2012

Single room per week on bed and breakfast basis £320.00

Single room per week on half board (breakfast and dinner) basis £363.00

Twin room per person per week on bed and breakfast basis £240.00

Twin room per person per week on half board (breakfast and dinner) basis £283.00

Olympic 2012 supplement (July & August) £50 per person per week

Centrally located, within 6 minutes walking distance of Oxford Street and Marble Arch Underground Station (which is 1 stop to Bond Street Station and 2 stops to Oxford Circus Station), the accommodation comprises 156 single rooms and 21 twin bedded rooms. All rooms have washbasins, telephone and computer points. The residence has 2 common rooms, equipped with televisions and videos, a bar, music room and a small private garden. Rooms are cleaned and bed linens changed weekly. Students are advised to bring their own bath towels. Internet access is available.



Newington Court

Zone 2 - Manor House Underground Station

Available from May to September – single room en suite from £230pw plus £50 Olympics supplement from July to August

Built in 2008, Newington Court is nestled in a tranquil residential part of Islington and borders Clissold Park. Canonbury station is just five minutes' walk away, with nearby Arsenal and Highbury & Islington underground stations connecting residents to the vibrant West End and bustling City. The House has accommodation for 85 residents single en-suites sharing well equipped kitchens. A TV is provided in every room. Facilities include an attractive TV lounge with pool table, modern laundry, high speed Internet access, secure bicycle storage and garden. Approximate journey time to the school 20 minutes. The residence is a short bus (141 and 341) ride away from Manor House station.

